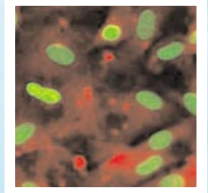
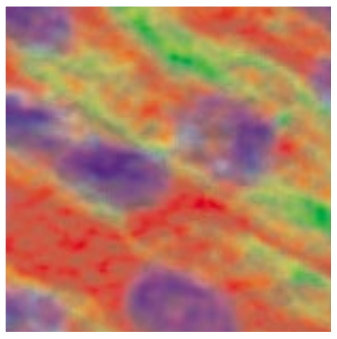


The Saban Research Institute



ChildrensHospitalLosAngeles
International Leader in Pediatrics



2nd Saban Research Institute Symposium on

Cell & Tissue Engineering

**The Saban Research Institute of
Childrens Hospital Los Angeles**

Sunday, Sept. 18 : Dinner with Special Speaker

Monday, Sept. 19 : 8 a.m. – Welcome and Introduction
Symposium – 8:15 a.m. to 6:30 p.m.

S P E A K E R S

Sir Magdi Yacoub, FRS, FRCS, FRCP, DS

Heart Science Centre, Harefield Hospital, Harefield, UK

Professor Martin Pera

Monash University and the Australian Stem Cell Centre
Clayton, Victoria, Australia

Peter Lansdrop, MD/PhD

University of British Columbia, Vancouver, BC, Canada

Margaret Goodell, PhD

Baylor College of Medicine, Houston, TX

Eli Keshet, PhD

Hebrew University - Hadassah Medical School,
Jerusalem, Israel

Vincent Fleury, PhD

Groupe Matière Condensée et Matériaux,
Groupe Biophysique, Université de Rennes

Paul Sternberg, PhD

California Institute of Technology, Pasadena, CA

Anthony Atala, MD

Wake Forrest University, Winston-Salem, NC

Gail Naughton, PhD

San Diego State University, San Diego, CA

Peter Zilla, MD/PhD

University of Cape Town, Cape Town, South Africa

James B. Bassingthwaight, MD, PhD

University of Washington, Seattle, WA

David Williams, DSc FEng

UK Centre for Tissue Engineering, Liverpool, UK

**To register for the Symposium,
please e-mail:
sabansymp05@hotmail.com**

The Saban Research Symposium Series emphasizes basic science discoveries and translation of these discoveries into new therapies for childhood diseases. The Saban symposiums are designed to promote the discussion of cutting-edge research and newest ideas between participating scientists. The 2nd Saban Symposium 2005 focuses on the cell and tissue engineering. The program brings together scientists working on diverse model systems with a goal of uncovering common themes in cell and tissue engineering.



The Saban Research Institute of Childrens Hospital Los Angeles

On June 29, 2003, Childrens Hospital Los Angeles dedicated the Childrens Hospital Los Angeles Research Institute as The Saban Research Institute of Childrens Hospital Los Angeles, and its new 88,500 square-foot state-of-the-art research laboratory facilities as the Saban Research Institute building – in recognition of Cheryl and Haim Saban’s “...commitment to the children and families of Los Angeles and children everywhere.”

Cheryl Saban is an author and children’s advocate who has been a member of the Childrens Hospital Los Angeles Board of Trustees for more than seven years. Haim Saban is chairman and CEO of the Saban Capital Group, Inc., a private investment firm, and a leading philanthropist. The Sabans have made a \$40 million gift to support and stimulate pediatric medical research at Childrens Hospital Los Angeles. It is believed to be the largest single gift of its kind to a children’s hospital in North America.

The Saban Research Institute of Childrens Hospital Los Angeles is the largest and most productive pediatric research center in the western United States, with 86 investigators at work on more than 200 laboratory studies and clinical trials. It is one of the few freestanding research centers in the nation to combine scientific laboratory inquiry with patient clinical care – dedicated exclusively to children and adolescents – and its base of knowledge is widely considered to be among the best in pediatric medicine.

Scientists at The Saban Research Institute are engaged in seeking new therapeutic approaches to childhood cancer, in finding ways to correct the function of abnormal genes through a combination of gene therapy and cell therapy, and in seeking insight into the molecular control of organ development. Other areas of investigation include advancing research in tissue engineering, harnessing the power of digital imaging to provide better ways to monitor the benefits of new therapies, and seeking new ways to prevent and manage diabetes. It is engaged in new scientific initiatives that will probe the functions of the brain to address the most vexing pediatric brain diseases and injuries, as well as studies that target the child, the family and the community to ensure that children grow and mature into healthy, productive adults.

